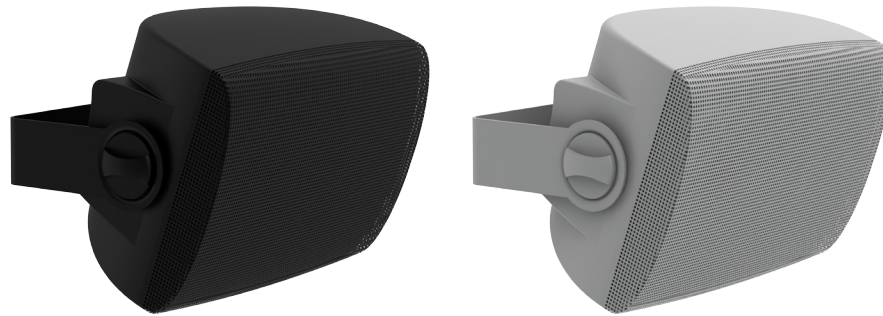


CS-S6 6.5" Surface-mount Loudspeaker

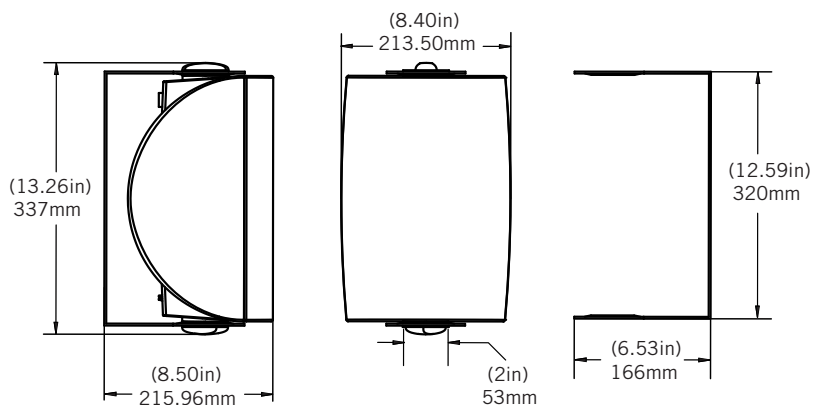


General Description

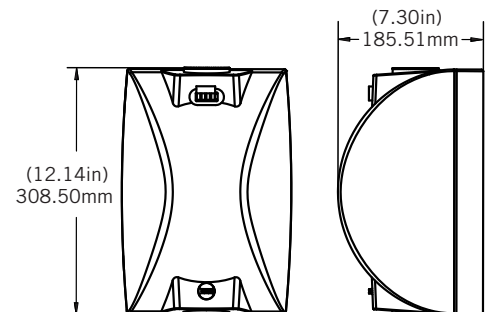
The Cloud CS-S6 is an 6.5 inch coaxial two way surface mount loudspeaker featuring exceptional intelligibility and musical performance. Using premium drivers and electronics, the CS-S6 offers high sensitivity, smooth frequency response, and excellent off axis performance. The 6.5 inch woofer incorporates a large magnet structure, a treated paper cone, and a butyl rubber surround for lasting, low distortion performance. The 1.0 inch (25.4 mm) tweeter is a silk soft dome with a phase plug to smoothly distribute the high frequency energy. The included 32 W transformer provides plenty of power for even high SPL applications. The 16 ohm impedance allows for easy low impedance daisy chaining.

- Front mounted tap switch
- Premium drivers and electronics for exceptional sound quality and intelligibility
- Integrated high power transformer with bypass
- 16 ohm impedance for low impedance daisy chaining
- Designed to mount vertically and horizontally
- Coaxial drivers for optimal off axis performance when mounted either horizontally or vertically
- 4-pin Euroblock connectors for easy daisy-chaining and secure connections

Speaker Dimensions



Speaker Enclosure



Applications

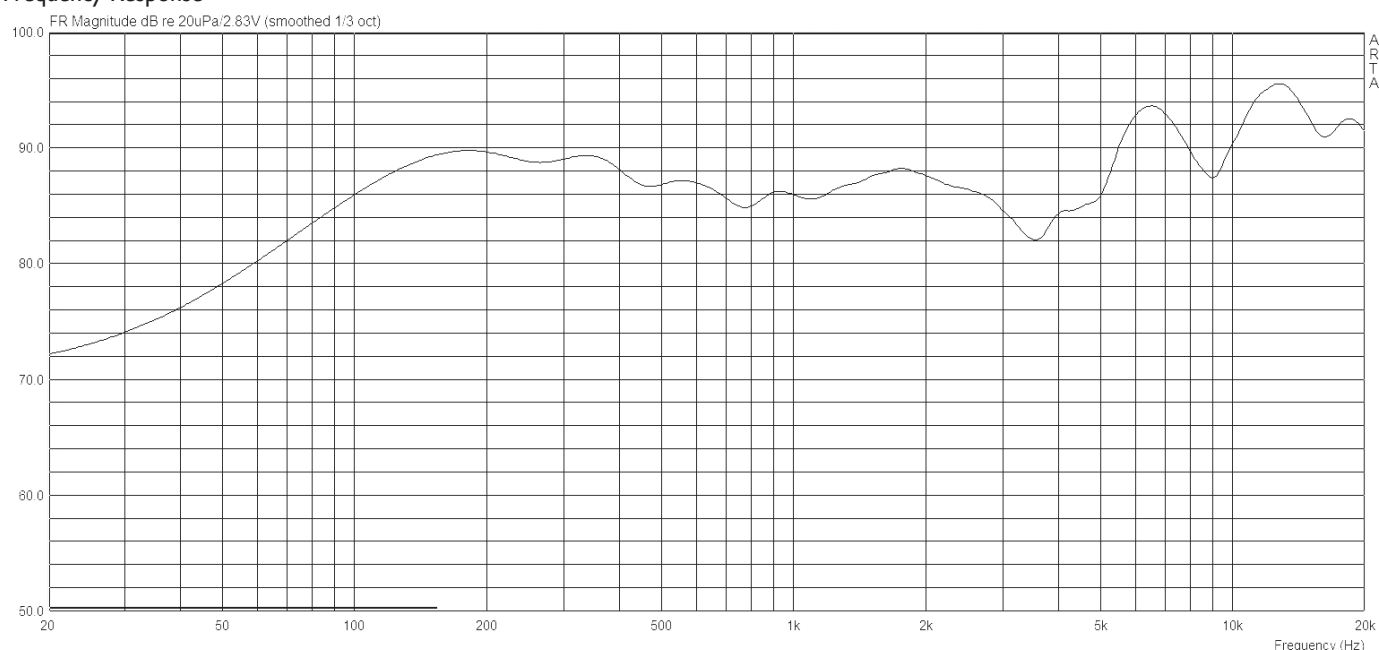
The CS-S6 was developed as a versatile background music and mid-SPL paging speaker. It offers superior acoustic performance, and premium design at an economic price point. It is ideally suited for use in restaurants, retail stores, airports, churches, board rooms, health care facilities, and hotels. The entire CS-S series shares the same acoustic signature, so installations with varying SPL requirements can seamlessly integrate multiple models from the line. The CS-S6 is a premium background and paging speaker that offers high end performance and design at an affordable price point.

Tap Settings

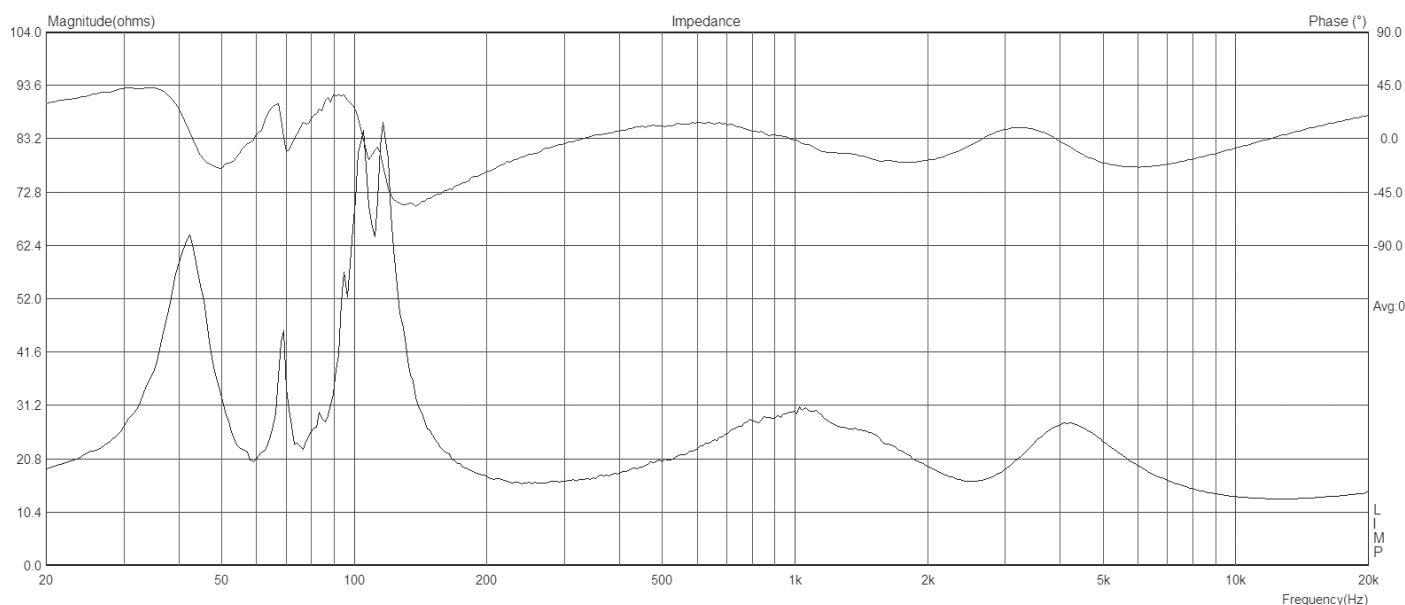
| Tap | Tap Settings | | |
|-----|--------------|------|------|
| | 100 V | 70 V | 25 V |
| 1 | 16 ohm | | |
| 2 | X | 32W | 4W |
| 3 | 32W | 16W | 2W |
| 4 | 16W | 8W | 1W |
| 5 | 8W | 4W | 0.5W |
| 6 | 4W | 2W | 0.3W |

Graphs

Frequency Response



Impedance



Technical Specifications

| | |
|--------------------------|--|
| Description | 6" 2-way surface-mount, U-bracket |
| Response (f3) | 90 Hz -20 kHz |
| Response (f10) | 70 Hz -20 kHz |
| Impedance | 16 ohm |
| Sensitivity (2.83 V/1 m) | 88 dB |
| Sensitivity (1 W/1 m) | 91 dB |
| Power handling | 50 W |
| Maximum SPL | 108 dB |
| Transformer taps | 32, 16, 8, 4, 2 W |
| Tweeter | 1 inch silk dome with phase plug |
| Woofer | 6.5 inch treated paper with rubber surround |
| Input | 4 pin Euroblock |
| Included accessories | U-bracket, male Euroblock, EVA port plug |
| Optional accessories | n/a |
| Packaging | 1 per box, cardboard inner packaging, single instruction sheet |
| Conformance | UL1480 / 2043 planned, RoHS, CE approved |

Architect's and Engineer's Specification

The loudspeaker shall consist of one powder coated steel enclosure containing two transducers, a frequency dividing network, a transformer, and acoustic damping material. It shall incorporate an integrated mounting system including U-bracket. It shall include one removable steel grille affixed to the baffle via integrated magnets. The grille shall include a removable logo tab.

The loudspeaker shall include one 101.6 mm (6.0 inch) low-frequency transducer in a ported enclosure. The low frequency voice coil diameter shall be 25.4 mm (1.0 inch). The low-frequency transducer shall have a treated paper cone material with a rubber surround. The high-frequency transducer shall incorporate a silk dome with a plastic phase plug.

The loudspeaker shall include a 20 watt transformer with taps at 32 W, 16 W, 8 W, 4 W and 2 W. Said taps shall be selected via an included tap switch located on the front baffle, under the magnetically removable grille. The transformer shall accept 25 V, 70.7 V, or 100 V. The tap switch shall also include a transformer bypass position, allowing for direction connection to the 16 ohm low impedance circuit.

Nominal performance specifications shall be as follows: The loudspeaker shall have a usable frequency range extending from 70 Hz - 20 kHz (-10 dB). The nominal impedance shall be 16 ohms, and the maximum continuous RMS power handling shall be at least 32 W according to the EIA-426-B standard. Sensitivity measured at 2.83 V / 1 m shall be 88 dB. The maximum output at 1 m shall be 91 dB.

Installation for the speaker shall be with U-bracket and shall attach to the wall. The external wiring shall be via 4-position 5.08mm Euroblock connector; accepting up to 10 gauge wire. The maximum overall height shall be no more than 337 mm (13.26 inches) and the maximum depth shall be no more than 215.96 mm (8.5 inches). The unit is factory preset to the 32-watt setting in the 70.7-volt operating mode, with a tap switch located on the front baffle.

The system shall be the Cloud CS-S6 for both low- and high- impedance applications.

Cloud Electronics Limited

140 Staniforth Road, Sheffield, S9 3HF, England.
Telephone: +44 (0)114 244 7051 Fax: +44 (0)114 242 5462
Web: www.cloud.co.uk E-mail: info@cloud.co.uk

Cloud Electronics USA

1200 A Iron Horse Drive, Park City
Utah 84060, United States of America.
Toll Free: 0855 810 0161
Web: www.cloudusa.com E-mail: sales@cloudusa.com